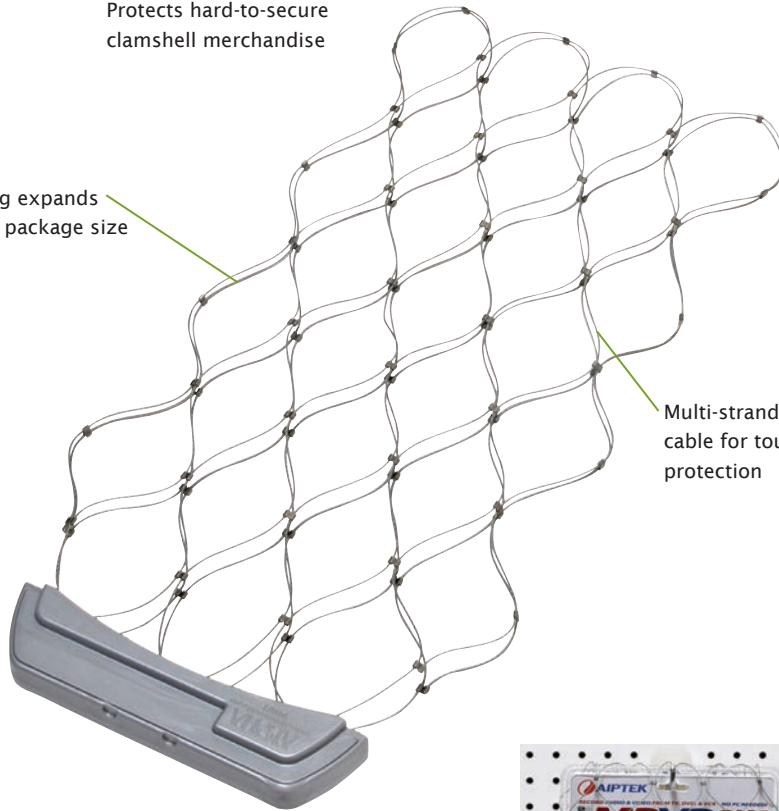


Protects hard-to-secure clamshell merchandise

Mesh bag expands easily to package size



Multi-strand steel cable for tough protection



The Spider Web's unique multi-strand steel cable mesh bag presents an excellent visual deterrent that allows open merchandising without the risk. Spider Webs provide breakthrough security for even the most irregular-shaped packages.

KEY FEATURES:

- Thin, sleek design
- Easy to apply and remove
- Tough, secure and reusable

SUGGESTED APPLICATIONS:

15" Spider Web: Fits packages with girth up to 21.25"

17" Spider Web: Fits packages with girth up to 23.25"

Girth = L+W+D



| ORDER CODE | SAP CODE | DESCRIPTION | INTERNAL DIM. (H x W x D) | CARTON QTY. |
|------------|----------|---------------------|------------------------------------|-------------|
| SW15ND | 9219284 | Spider Web 15" - AM | 15.00"H x 7.00"W x 3.00"D | 10 |
| SW15RF | 9219285 | Spider Web 15" - RF | (38.10 cmH x 17.78 cmW x 7.62 cmD) | |
| SW17ND | 9219286 | Spider Web 17" - AM | 17.00"H x 7.00"W x 3.00"D | 10 |
| SW17RF | 9219287 | Spider Web 17" - RF | (43.18 cmH x 17.78 cmW x 7.62 cmD) | |